

SKS 66, SKS 68 // Weld couplings



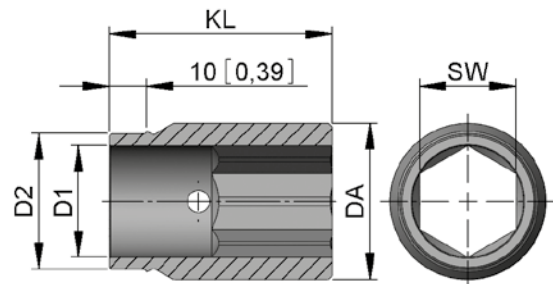
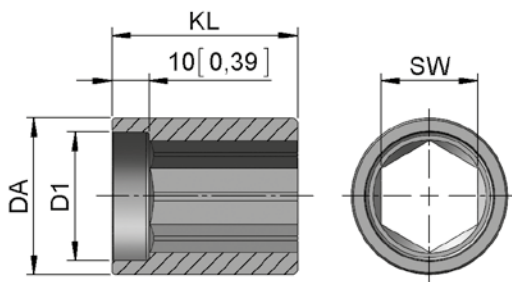
- Coupling without angle adjustment with one-sided axial mounting to transmit drive torques between gear units, e.g. LZG, SZG.
- SKS 66.50 centring tube, outer diameter (OD), SKS 66.6036 // SKS 68 centring tube inner diameter (ID)
- The coupling is welded to the ends of adapter tubes on the building and is then pushed onto the end of the gear unit shaft.
- Coupling made of weldable steel, untreated (i.e. unpainted), Version SKS 66.6036, galvanised.

Note:

- Adapter tube and SKS must be aligned flush. Weld together using fixture, plan in scope for approx. 3 mm of expansion between coupling and gear unit shaft.

SKS 66.50

SKS 66.6036 // SKS 68



mm [inch]

Version	We 66	We 68	T max [Nm]	SW [mm]	D1 [mm]	D2 [mm]	DA [mm]	KL [mm]	Tube ø [mm]	m [kg]
	Type no.	Type no.								
SKS 66.5034	20166.4250.34	-	300	26	34,5	-	42	50	1"	0,3
SKS 66.6036	20266.4260.3601	-	450	26	30,0	36,5	42	60	5/4"	0,3
SKS 68.6537	-	20268.6065.3771	600	30	34,5	36,5	42	65	5/4"	0,5
SKS 68.6552	-	20268.6065.52	750	30	35,0	52,0	60	65	2"	0,9

→ Used for LZG 24