

# RMA 20 // Tube motor

## 50–120 Nm

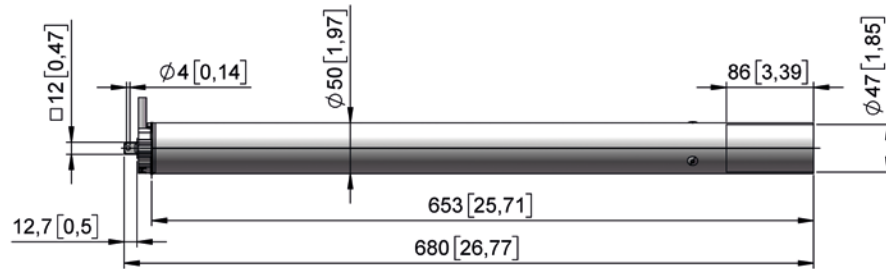


- Robust tube motor for driving roller sheeting systems such as for internal shading, partition walls or rolling systems.
- Compact design with zero-maintenance and low-noise steel gear units.
- Operating mode S2 4 min. type of protection IP 44.
- Asynchronous motor with installed mechanical precision limit switch for 22 revolutions.
- With aluminium tube 50 x 1.5 / 63 x 1.5 mm for connection by coupling to a 50 / 63 mm rolling tube.
- Shaft journal 12 x 12 / 16 x 16 mm with cotter pin for connection to guidance system.
- High-quality 4 m length of connection cable, UV-resistant.

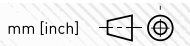
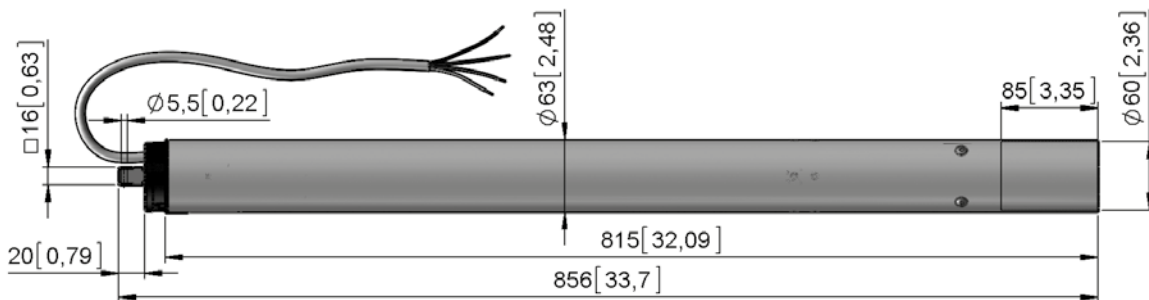
**Note:**

- We are always pleased to provide you with technical advice because performance and service life depend very much on the design of your application. Please refer to Chapters 1 and 2 for typical applications.
- The tube motor needs to be protected against water ingress.

RMA 20.05  
50 Nm



RMA 20.12  
120 Nm



## RMA 20

50–120 Nm



RMA 20.05



RMA 20.12

Version	Type no.	T [Nm]	n [1/min]	I [A]	m [kg]	
<b>230 V 1~, 50 Hz</b>						
RMA 20.0512	17220.0512.50	50	12,0	1,5	4,2	
RMA 20.1212	17220.1212.63	120	11,0	1,9	6,8	
Version	Type no.	T [Nm]	T [in.-lb]	n [rpm]	I [A]	m [kg]
<b>120 V 1~, 60 Hz</b>						
RMA 20.0512	17220.0512.5030	50	450	12,0	2,3	4,3

## Accessories



Version	Type no.	Info	
<b>Connection end (guide end)</b>			
WRZ 01**	81801.01.xx	Guide profile // L = 2.00–6.00 m // aluminium	
WRZ 10.0111	81810.0111	Roller carriage for RMA 20.05	
WRZ 10.0122	81810.0122	Roller carriage for RMA 20.12	
WRZ 20.5011	81820.5011	Cable guide chain	
WRZ 20.9102	81820.9102	Start clip	(not illustrated)
WRZ 20.9111	81820.9111	End clip	(not illustrated)
WRZ 20.0111	81820.0111	Mounting plate for RMA 20.05	
WRZ 20.0112	81820.0112	Mounting plate for RMA 20.12	
WRZ 30.0105	81830.0105	Mounting plate for stationary assembly RMA 20.05	
WRZ 30.0112	81830.0112	Mounting plate for stationary assembly RMA 20.12	
<b>Output side (tube side)</b>			
WRA 50.0222	20998.5002.22	Tube motor adapter for RMA 20.05 and tube $\varnothing$ 22 x 2 mm	
WRA 50.0232	20998.5002.32	Tube motor adapter for RMA 20.05 and tube $\varnothing$ 32 x 1.5 mm	
WRA 50.0234	20998.5002.34	Tube motor adapter for RMA 20.05 and tube 1"	
WRA 63.0222	20998.6302.22	Tube motor adapter for RMA 20.12 and tube $\varnothing$ 22 x 2 mm	
WRA 63.0232	20998.6302.32	Tube motor adapter for RMA 20.12 and tube $\varnothing$ 32 x 1.5 mm	
WRA 63.0234	20998.6302.34	Tube motor adapter for RMA 20.12 and tube 1"	
WRO 22.5015	81622.5015.1050	Roller tube // $\varnothing$ 50 x 1.5 mm // L = 5.00 m, aluminium	
WRV 50.2246	81650.2246.2004	Roller tube connector // $\varnothing$ 50 mm roller tube	
WRV 50.2260	81650.2260.2010	Roller tube connector // $\varnothing$ 63 mm roller tube	

→ Detailed Information and dimensional drawings, see Accessories, Chapter 10